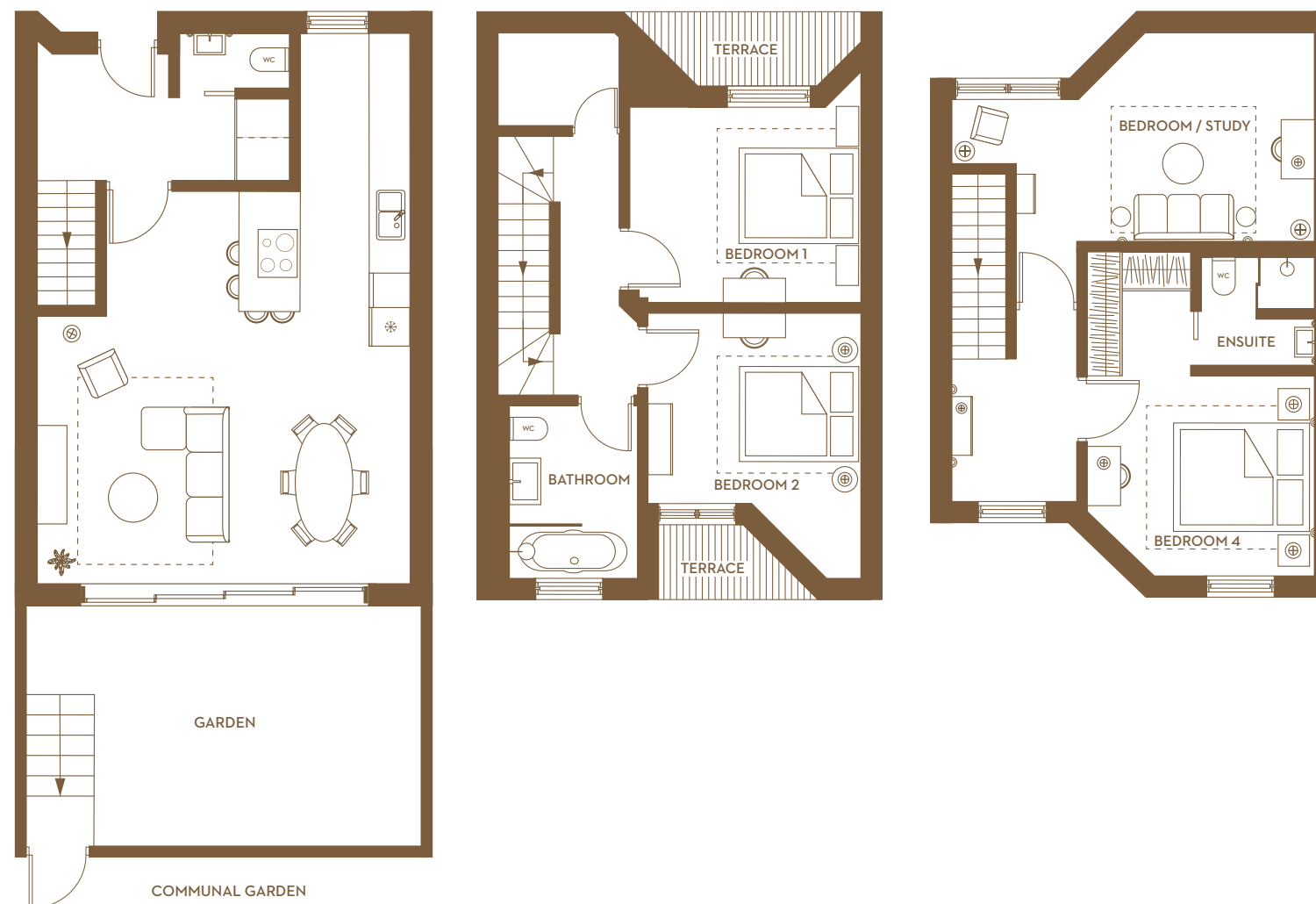


# N° 3

## 4 Bedroom House

Internal Area (NIA) 127m<sup>2</sup> / 1363 sq. ft.

Kitchen / Living Area	8.2m x 5.6m	27' x 18'2"
Bedroom 1	3m x 3.5m	9'7" x 11'6"
Bedroom 2	4m x 3.3m	13'3" x 10'7"
Bedroom / Study	3.3m x 5.6m	10'8" x 18'2"
Bedroom 4	4.9m x 3.6m	16'1" x 11'6"
Ensuite	1.7m x 1.8m	5'55" x 5'8"
Bathroom	2.6m x 1.9m	8'6" x 6'4"
Cloakroom	0.9m x 1.6m	3' x 5'3"
Terrace	3m <sup>2</sup>	36.6 sq. ft.
Terrace	2m <sup>2</sup>	21.5 sq. ft.
Garden	26m <sup>2</sup>	275 sq. ft.



### FLOOR PLANS & CGIs

Floor plans are intended to give a general indication of the proposed floor layout and refer to approximate measurements only and are subject to changes. Photos, computer generated images (CGIs) and drawings contained in this website are indicative only. Local maps and illustrations of the site are not to scale, landscaping, gradients and street furniture may differ to what is shown and should not be relied upon as depicting the final as built development or apartment. All sales remain subject to contract.

